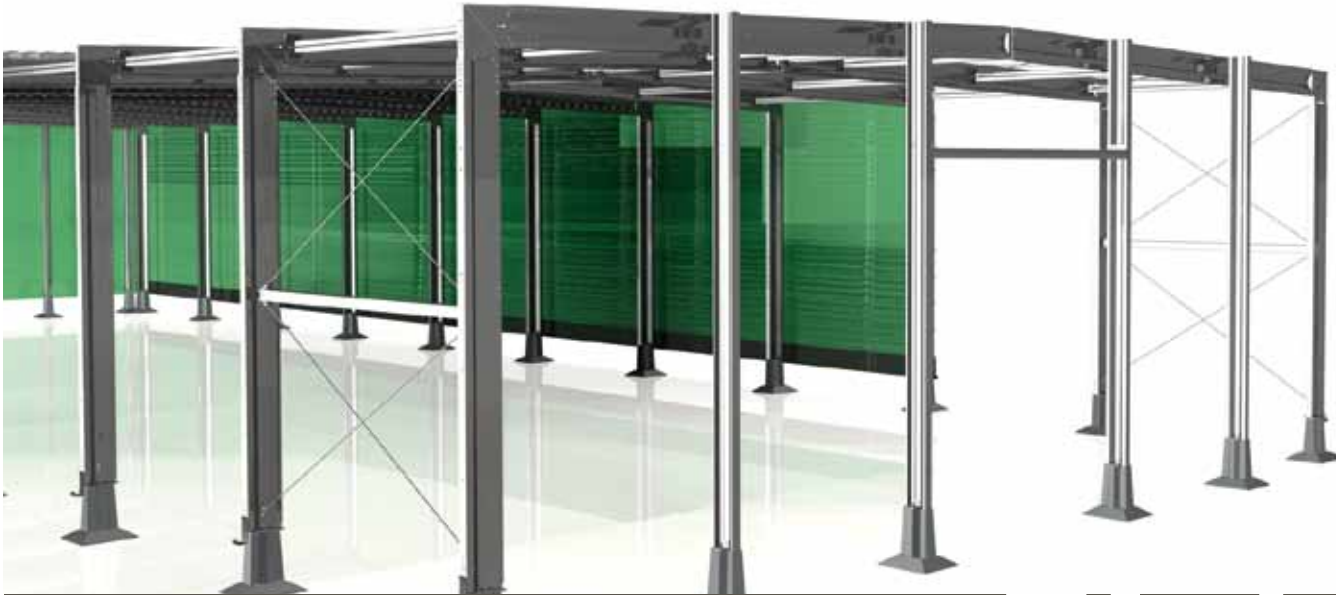


FRISO/MAT®

Innovators in steel buildings



FLATRIGMA

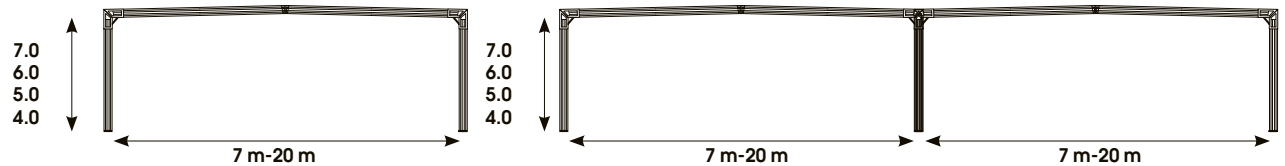


Dimensions

Flatrigma. A stylish, sustainable building with a flat roof.

Five-star choice:

- Spans from 7 to 20 m, sidewall heights 4, 5, 6, and 7 m
- 100% galvanised High Strength Steel structure
- Roof pitch 1,72° (virtually flat)
- Designed in accordance with client requirements
- Extendable and expandable at all times



All dimensions can vary depending on local requirements and regulations.

FLATRIGMA

elegant || STABILITY

Flatrigma, a stylish building with a flat roof. An aesthetic design with an elegant structure.

Design for life

Looking for a sustainable building for versatile use? Need imperceptible integration in an industrial estate? Flatrigma offers the perfect solution. The completely galvanised, cold rolled base structure is made of prefabricated, elegant, Σ -shaped profiles. All standardised elements are specially designed, developed, optimised and produced in-house guaranteeing maximum quality. An elegant, versatile, sustainable, high quality building. Built to last.

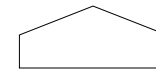
The flat roof combined with a single beam structure results in an elegant building with maximum interior space. Using prefabricated components combined with the unique meccano-principle assures flexibility and speed during development, production and construction leaving plenty of room for personalisation. Almost 100% recyclable, no need for heavy equipment during construction, an optimised use of precious material. A wise, efficient investment leaving a smaller environmental footprint. No compromises on design, interior space or quality. A comforting thought.

Applications

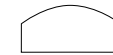
Flatrigma offers comfort and peace of mind, all in compliance with local standards and regulations, no matter what application you need it for.

Showrooms, secure storage or recreation facilities, production sites or office space, Flatrigma is the perfect fit. Depending on use or customers' wishes, Flatrigma buildings can be equipped with different types of doors, canopies, smoke vents, window and loading bays, and various other options. We create your project.

Frisomat has a wide range of products, based on seven construction systems and more than 200 standardised buildings. The four superior systems are fully modular, guaranteeing customers complete freedom in construction and finishings.



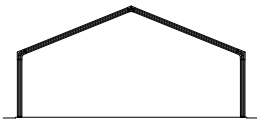
Delta



Upsilon



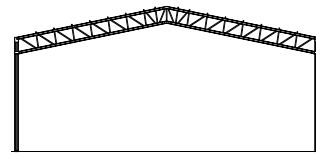
Omega



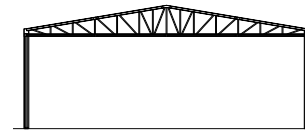
Sigma



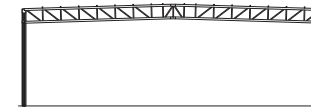
Astrigma



Astra



Ceptra



Flatro



Flatrigma

Frisomat Belgium

Frisomat nv/sa
Stokerijstraat 79
2110 Wijnegem
Belgium

+32 3 353 33 99

+32 3 353 32 52

info@frisomat.be

www.frisomat.be

Belgium - Bulgaria - France - Germany - Hungary - The Netherlands - Poland - Portugal - Romania - Slovakia - Spain - Ukraine - Angola - Lithuania

